

# **Czech Association of Rogaining and Mountain Orienteering**

VAT: CZ 66342180  
Bank: 721206359/0800

Address:  
Zahradní 413  
250 83 Škvorec  
Czech Republic

Office address:  
Zahradní 413  
250 83 Škvorec  
Czech Republic

To: *International Rogaining Federation  
WRC Manager*

## **Expression of Interest to host the World Rogaining Championships 2022 in the Czech Republic**

**Organizer:** Czech Association of Rogaining (CAR)

Website: <http://www.rogaining.cz/en/>

The Czech Association of Rogaining and Mountain Orienteering (CAR) was established in 1996 and is one of the oldest and the most active associations in Europe. The Czech Republic was the first European country hosting World Rogaining Championships (in 2002), in 2012 we organized the other World Rogaining Championships in Prebuz.

CAR also has organized Czech Rogaining Championships for 22 consecutive years – that is the longest series in Europe. In 2015 the Czech Championships was joined with the European Rogaining Championships.

### **Experience in organizing rogaines:**

- July, 26 – 27 2002 – WRC Lesna, Tachov
- August, 31 – September 1 2012 – WRC Prebuz, Karlovy Vary
- June, 27 – 28 2015 – ERC Černé Údolí, South of Bohemia
- National Rogaining Championships every year since 1997

**Coorganizer:** SK Haná Orienteering, local orienteering club from Olomouc

Website (in Czech): <http://sk.hanaorienteering.cz/>

**Proposed date of Event:** August 19 – 20 2022 (Friday, Saturday)

### **Proposed Event Centre:**

Ski resort Paprsek will be rented for exclusive use as the event centre of the WRC 2022:  
<http://www.paprsek.cz/en/>.

## Planned Event location:

Kralický Sněžník mountains, Olomouc region, Czech Republic; partly in Poland

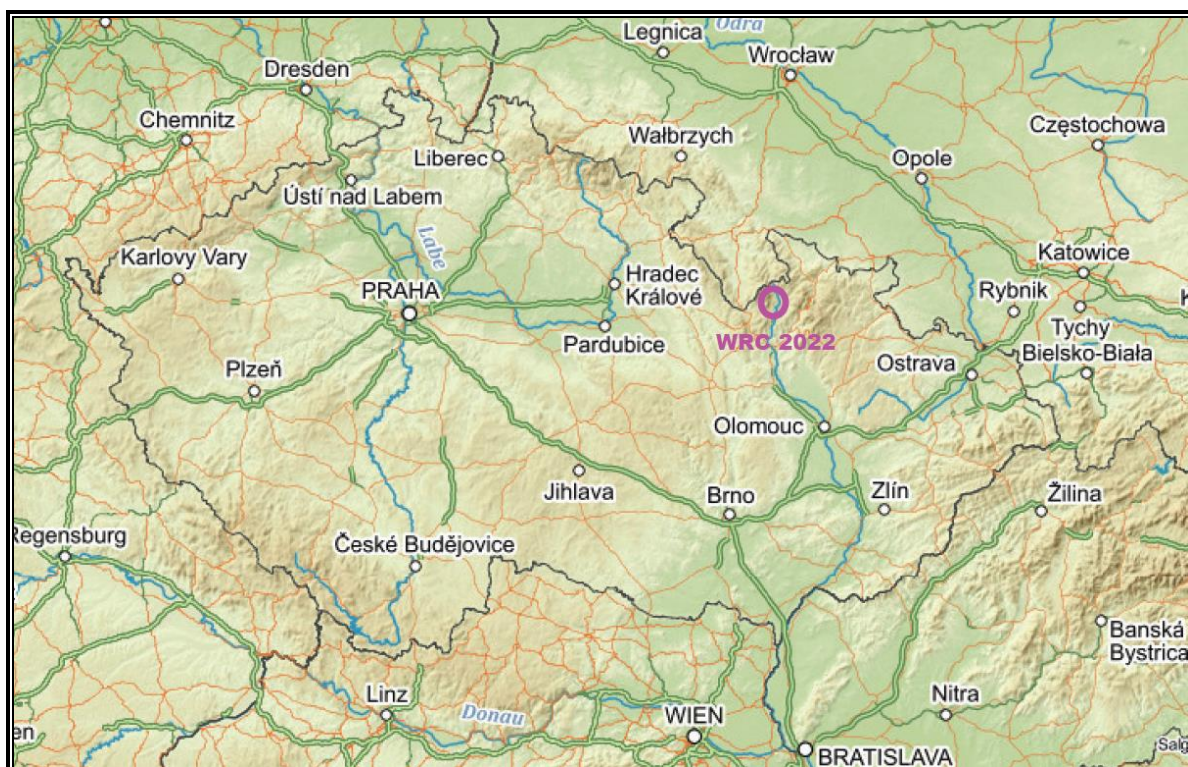
Event centre: Staré Město, Hotel Paprsek (<http://www.paprsek.cz/en/>)

Nearest town: Hanušovice (10 km), Šumperk (25 km)

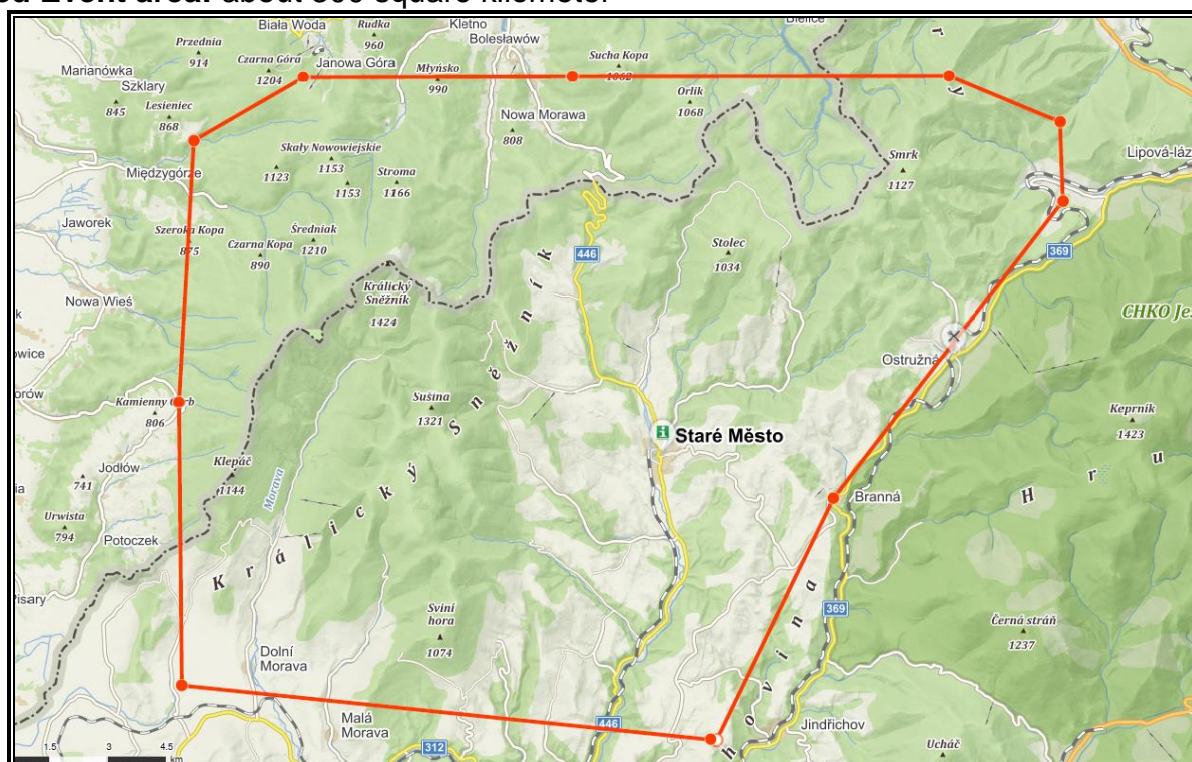
Nearest major city: Olomouc (about 70 km to south)

Nearest airport with regular passenger transport (RPT) flights: Ostrava (about 105 km to east), Prague (about 180 km to west)

Nearest major city in Poland: Wrocław (about 110 km to north)



Planned Event area: about 300 square kilometer





**Terrain:** We have chosen very attractive area of Kralický Snežník mountains along the border of the Czech Republic and Poland.

Hilly terrain (elevation from 500 to 1424 m above the sea level) offers mountain meadows in lower parts contrasting with deep forests of the upper parts. The mountain ridge is covered by semi-open areas. There are steep slopes and deep valleys with many streams and mixed forest with various level of passability, relatively high number of forest tracks, paths and trails. Varying vegetation and geomorphology of the terrain allow the course setter alternating of difficult passages with the easier ones so that athletes have to prove high level of mapping skills and a well-chosen planning strategy.





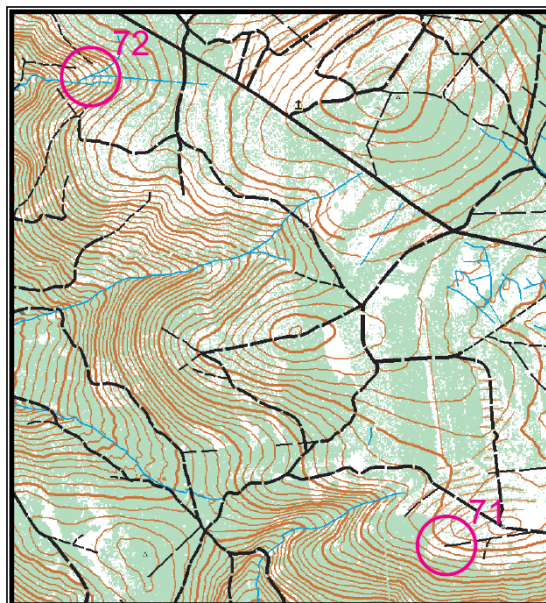


The terrain character of the proposed area is clearly obvious from the orienteering map “Kuncicka” in the Attachment #1 (approx. 2 km from the WRC event centre).



**Map:** A special rogaining map (scale of 1:40 000 or 1:30 000 and contour interval 10 meters) will be developed for the WRC event. Laser scan/Lidar base map will be precised in OCAD software; field work shall be finalized up to the spring of 2022.

**Example of the WRC map style:**



### **Technical Software & Equipment:**

Electronic system SportIdent will be used for check point punching. As a precaution against stealing or failure of a SI unit all check points will be equipped with a plastic stripe from which competitors copy an unique code to their map.

Final results will be computed using our own software tested on numerous Czech national rogaining championships and ERC 2015. The programme provides results in format fully compatible with the IRF requirements (.html and .xml file). Although read out failure of the system is very unlikely, we are ready to pick-up of SI units from the forest read out them in few hours.

### **Weather and climate:**

Central European Climate. At the proposed date of the competition you can expect warm sunny weather (daytime temperatures 20-25°C, night-time temperatures 5-15°C) and average probability of rain. With regards to the altitude and mountain character of the race area be prepared for the possibility of sub-zero (<32°F) temperatures (esp. overnight), windy weather, storms and hail even at this part of the year.

### **Sun and Moon during the WRC 2022:**

Full Moon is on 12 August 2022 at 03:36 (Middle Europe Summer Time)

Place: Staré Město, Czech republic, Loc: 50,162 N, 16,947 E

#### **Friday, August 19, 2022**

|          |       |
|----------|-------|
| Sunrise  | 05:48 |
| Moonset  | 14:42 |
| Sunset   | 20:02 |
| Moonrise | 23:11 |

## Saturday, August 20, 2022

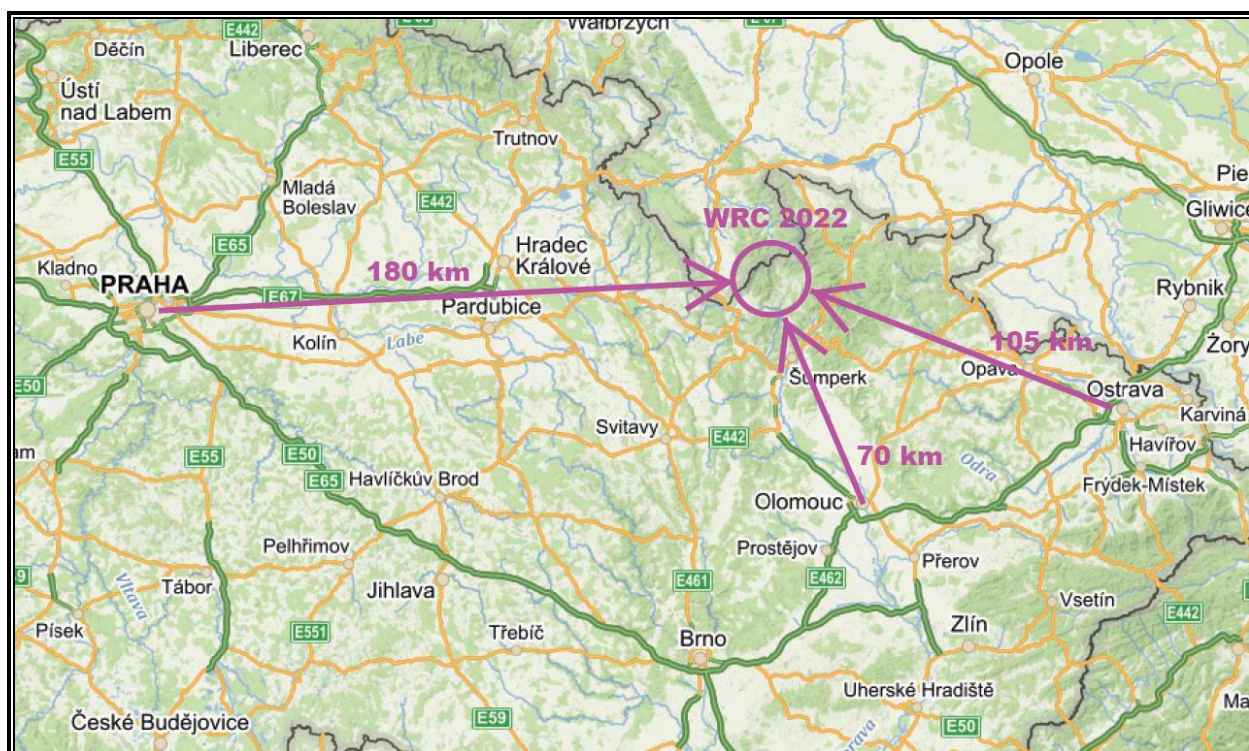
Sunrise 05:50  
Moonset 15:52  
Sunset 20:00  
Moonrise 23:41

## Competitor Numbers and Entry Criteria:

Participation limit: 1000 persons

The organizers of the World Rogaining Championships will adopt the IRF's WRC Entry Criteria.

## Logistics:



Staré Město is a small village accessible by public transport (train or bus):

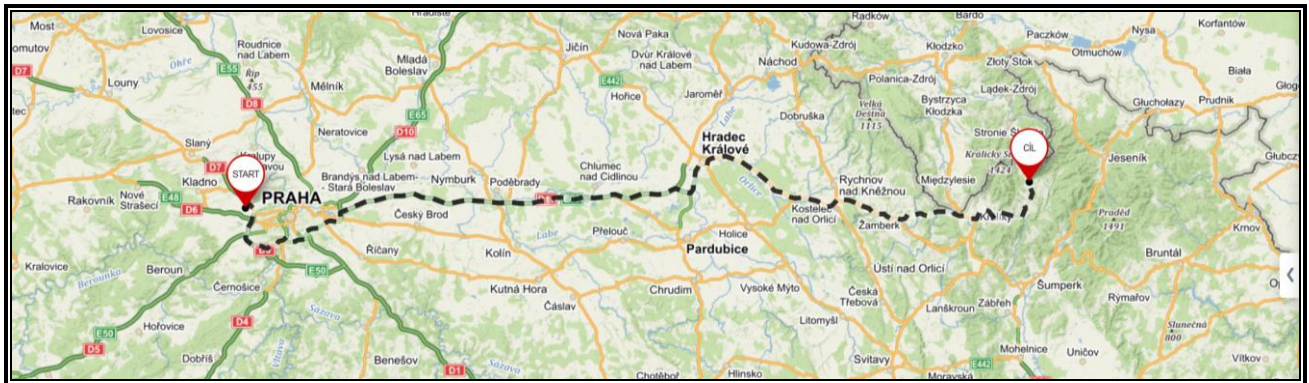
- From Prague airports (Vaclav Havel Airport, terminal 1 or 2) use Prague public transport to Central Railway Station, take a train to Zábřeh na Moravě, change to a train to Hanušovice and Staré Město. The other possibility is to use a bus from Central bus station Prague Florenc to Hanušovice, change to a train or a local bus to Staré Město.
- From Ostrava airport (Leoš Janáček's Airport) by train to Ostrava Central station, change to a train to Zábřeh na Moravě, change to a train to Hanušovice and Staré Město.

Details of transport connections will be published on the event website.

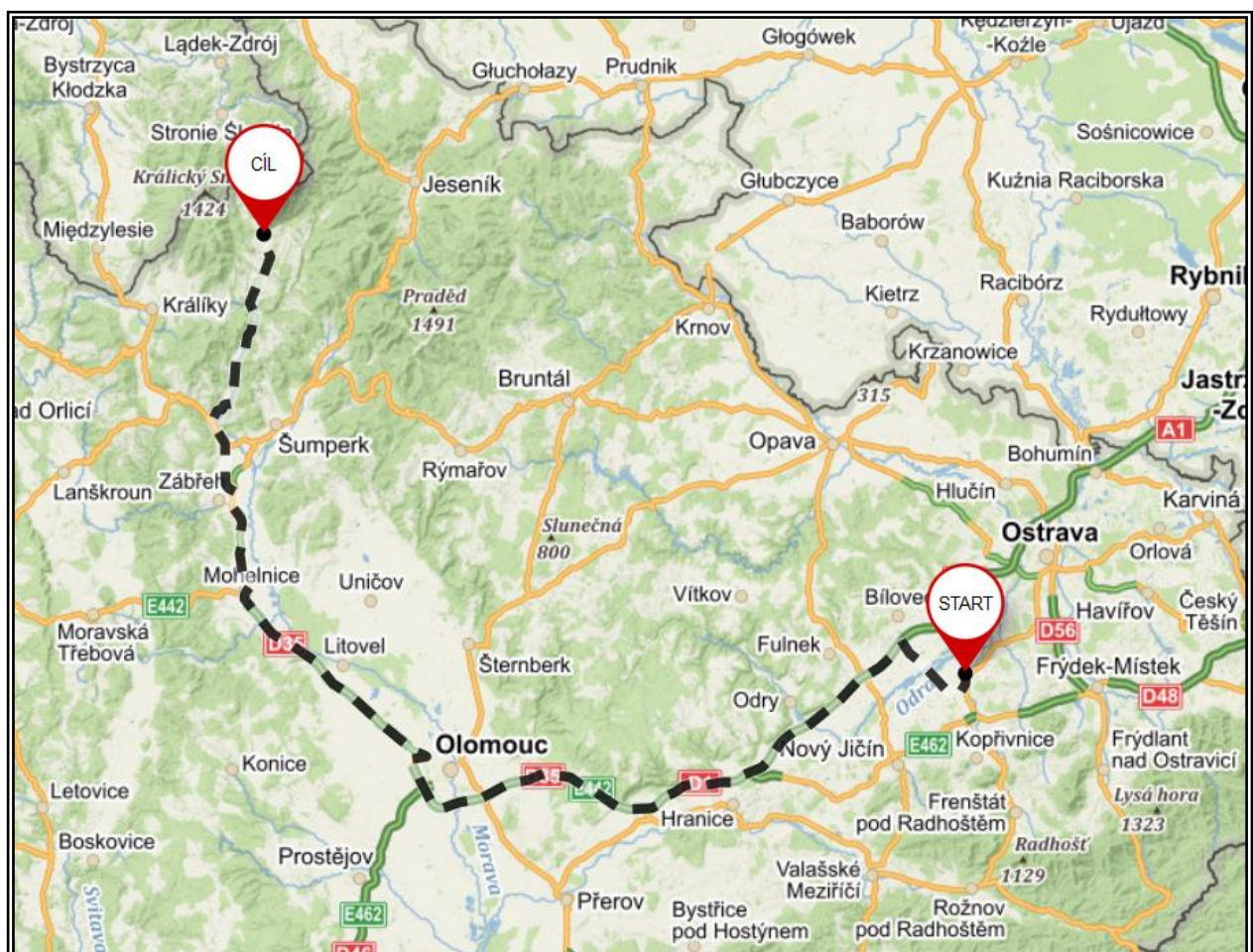


### Transport by a car:

- From Prague Airport follow Hradec Králové highway D11 (E67), in Hradec Králové take road 11 to Žamberk, there take road 312 to Hanušovice and road 446 to Staré Město. **The journey: 240 km, about 3 hours.**



From Ostrava Airport follow Olomouc highway D1 and highway D35 to Mohelnice, in Mohelnice take road 44 to Zábřeh na Moravě, there take road 369 to Hanušovice and take road 446 to Staré Město. **The journey: 165 km, about 2 hours**





## Transport offered by the event organizer:



Transportation by organizer's coaches or pick-up from Zábřeh na Moravě (railway station) or Hanušovice (railway and bus station) can be arranged upon request. The demands will be collected via event entry system.

## Parking, Accommodation and Catering:

Nearby the event centre there are a lot of hotels and pensions offering full service. Detailed information will be published on the event website.

An exclusive event campsite and parking areas for competitors will be located at the Paprsek Ski-resort.

Hash House catering will be provided by a professional company with plentiful experience from long-distance sport events like MTB and cross-country skiing marathons, etc. Standard meals including vegetarian and diet food and standard opening hours will be provided.

In addition to the Hash House a restaurant of hotel Paprsek will be available as well.



## **Organizing Team:**

### **The Event Director:**

**Tojnar Jan** (languages: Czech, English) – WRC Manager and Member of the IRF Council

E-mail: [jan.tojnar@rogaining.cz](mailto:jan.tojnar@rogaining.cz)

Rogaining experiences:

- Event chief secretary of WRC 2012
- Course setter and key organizer of the Czech National Rogaining Championships 2004, 2009 and 2019
- WRC participation: WRC 2016 (Australia), WRC 2015 (Finland), WRC 2010 (New Zealand), WRC 2008 (Estonia), WRC 2006 (Australia), WRC 2002 (Czech Republic)
- ERC participation: ERC 2015 (Czech Republic), ERC 2009 (Finland)
- Participant of numerous Czech National Rogaining Championships

### **The Course Setter:**

**Krejčík Zbyněk** (languages: Czech, English, and Polish)

E-mail: [zbynek@ukrej.cz](mailto:zbynek@ukrej.cz)

Rogaining experiences:

- Member of WRC 2012 organizational team (check point marking, setting and gathering)
- Course setter and key organizer of the Czech National Rogaining Championships 2010 and 2014
- WRC participation: WRC 2017 (Latvia), WRC 2015 (Finland)
- ERC participation: ERC 2015 (Czech Republic), ERC 2010 (Ukraine), ERC 2009 (Finland)
- Participant of numerous Czech National Rogaining Championships

### **The Course Vetter:**

**Seidl Miroslav** (languages: Czech, English and Russian) – President CAR and Member of the IRF Council

E-mail: [miroslav.seidl@rogaining.cz](mailto:miroslav.seidl@rogaining.cz)

Rogaining experiences:

- Event director of WRC 2012
- Course vetter of WRC 2012 and ERC 2015 (Czech Republic)
- Course setter of the Czech National Rogaining Championships 2005 and 2008
- WRC participation: WRC 2017 (Latvia), WRC 2016 (Australia), WRC 2015 (Finland), WRC 2013 (Russia), WRC 2008 (Estonia), WRC 2006 (Australia), WRC 2004 (USA), WRC 2002 (Czech Republic)
- ERC participation: ERC 2018 (Ukraine), ERC 2017 (Italy), ERC 2014 (Estonia), ERC 2011 (Latvia), ERC 2010 (Ukraine), ERC 2009 (Finland), ERC 2008 (Russia), ERC 2007 (Latvia), ERC 2005 (Estonia), ERC 2003 (Russia)
- Participant of numerous Czech National Rogaining Championships

### **Reserves for substitution of key organizers:**

Among CAR members there are many people capable of substitution of any key person of the WRC 2022 organizing team.

## **Associated and future Events:**

- June, 29 – 30 2019 – Czech National Rogaining Championships (24-hour rogaine plus 12- and 6-hour rogaines)
- March 2020 – Brutus Extreme orienteering rogaine (two days, 6+5 hours)
- June, 27 – 28 2020 – Czech National Rogaining Championships (24-hour rogaine plus 12- and 6- hour rogaines)
- March 2021 – Brutus Extreme orienteering rogaine (two days, 6+5 hours)
- June, 26 – 27 2021 – Czech National Rogaining Championships (24-hour rogaine plus 12- and 6-hour rogaines)
- March 2022 – Brutus Extreme orienteering rogaine (two days, 6+5 hours)
- June, 25 – 26 2022 – Czech National Rogaining Championships (24-hour rogaine plus 12- and 6- hour rogaines)

**Rules:** The World Rogaining Championships will be held in accordance with the International Rules of Rogaining published at the IRF website: <https://rogaining.org/>

## **Other Information:**

- WRC 2022 event will be supported by Regional government of Olomouc region; the initial contact has been established.
- The entry fee should keep the standard level of European WRC event (approx. 80,- € per a competitor).
- The area of WRC 2022 has been extensively used for sport and tourism (downhill skiing, cross country skiing, MTB, hiking, etc.).
- The WRC 2022 will be organized in close collaboration with Polish rogainers. In 2010 and 2016 we successfully co-organized common Czech-Polish cross border Rogaining Championships, partly located in Poland. Distance between event areas of the Czech Championships 2016 and WRC 2022 is only 30 km.
- As the proposed event area is easily accessible from Poland and Slovakia, we expect participation of many rogaining newcomers from these countries.

Miroslav Seidl  
CAR Prezident

Office address:

Czech Association of Rogaining and Mountain Orienteering (CAR)

Miroslav Seidl

Zahradni 413

250 83 Škvorec

Czech Republic

Phone: +420-739-327-204

E-mail: [miroslav.seidl@rogaining.cz](mailto:miroslav.seidl@rogaining.cz)

www: <http://www.rogaining.cz/>



## Attachment #1: A part of WRC area on orienteering map

